

Proudly made in  
Canada  
to Canadian  
Standards

# The Modular Home Series



**Winfield**  
HOME SYSTEMS

**SRI**  
H O M E S

## Who is SRI?

SRI is an acronym for "Shelter Regent Industries" and began in 1978 with the factory located in Estevan, Saskatchewan. The second factory, in Lethbridge, Alberta, became a part of SRI in 1985. The newcomer, the Kelowna factory, began producing homes in 1992. SRI has built over 30,000 homes for Canadian families since its beginnings over 30 years ago.



## It's all about design...

Not only can you custom design your floorplan, you then can design your decor. Browns, greens, beiges, grays.... or a combination. What works for you?



## Why Modular?

Modular actually describes a building concept and not a style of home. Building in "modules" is a common practice and so a Modular Home is simply a completed "module" of a home that is built in a factory and then transported to the home site. Once it is placed on the prepared foundation, it is no different than a site built home (except that it has not been exposed to the weather during the construction process.) Modular Homes can be a rancher, (or crawlspace) one storey style, or placed on a basement for two storeys.



## Let's get started...

See what the standard floorplans have to offer and how you can turn one of them into your new home!



## Standards and Specifications

### Exterior

- » Maintenance Free Vinyl Siding and Trim
- » Coloured Aluminum Fascia
- » 35 Year Fibreglass Shingles
- » 5/12 Roof Pitch with R44 Insulation
- » Door Chimes at Exterior Doors
- » 6 Panel Steel Insulated Exterior Doors with Storm Doors at Both Entries
- » 2x6 Exterior Walls at 16" o.c. with R-22 Insulation
- » Low E/Argon Energy Efficient Windows with Screens and Security Latches
- » Modular House Wrap
- » 23/32" OSB Tongue & Groove Floor Sheathing - Screwed and Glued
- » Engineered Floor System with R28 Insulation in Crawlspace Models
- » Weatherproof Outside GFI Receptacle
- » Exterior Frost Free Tap
- » Black or White Coach Lights at Each Exterior Door

### Interior

- » Painted Drywall with Rounded Corners & 3.25" Baseboards
- » Attractive Residential Textured Ceiling
- » 8' High Ceilings
- » "Clermont" White Passage Doors
- » Lever Handles on all Doors
- » Bifold Closet Doors
- » Contemporary Carpet Styles in Living Room, Dining Room, all Bedrooms, Hall and Den/Family Room
- » Linoleum Elsewhere
- » Pewter Light Fixture Package
- » Pewter Hardware
- » Wire Closet Shelving
- » Privacy Locks on Bathroom and Master Bedroom
- » Decora Switches & Receptacles Throughout

### Bathroom

- » One Piece Tub/Shower with Brushed Nickel Single Lever Faucet
- » Dual Lever Vanity Faucets
- » Pewter 3 Lite Fixture over Vanity
- » Pewter Towel Bar and Paper Holder
- » Shower Rods and Shower Curtain Liners
- » 6" x 6" Tile Backsplash
- » Exhaust Fan in each Bathroom
- » GFI Protected Receptacle

### Kitchen

- » 2-Speed Rangehood Fan with Light, Vented to the Exterior
- » Modular Cabinets with Deluxe PVC Raised Panel Doors and Designer Hardware
- » Raised Deep Cabinet over Refrigerator
- » Raised 39" Corner Upper Cabinet with Glass Insert (Some Models Only)
- » Extended sink Cabinet and Countertop (Some Models Only)
- » Pots & Pan Drawers
- » Microwave Cabinet
- » Double Stainless Steel Sink
- » Brushed Nickel Single Lever Faucet with Vegetable Sprayer
- » Crown Moulding
- » 6" x 6" Tile Backsplash



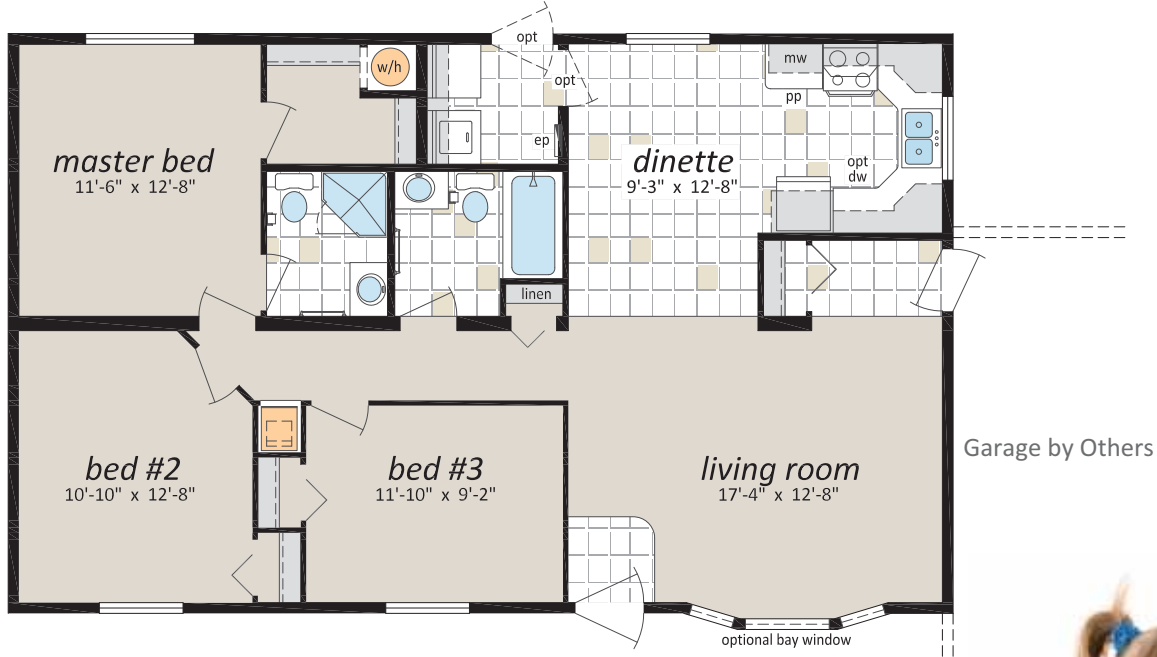
### Utilities

- » Heat Ducts (Crawlspace Homes)
- » High Efficiency A/C Ready Natural Gas Furnace with Electronic Ignition (Crawlspace Homes)
- » 40 Gallon (US) Electric Water Heater (Crawlspace Homes)
- » Plumbed and Wired for Washer and Dryer (Crawlspace Homes)
- » Potable Waterlines installed in Floor (Crawlspace Homes)
- » Electrical Panel - Shipped Loose (Basement Homes)
- » Life Saving Combination Carbon Monoxide/Smoke Detector(s)
- » Built to Applicable Provincial Codes



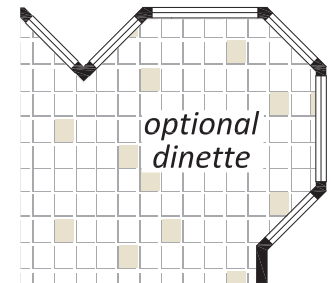
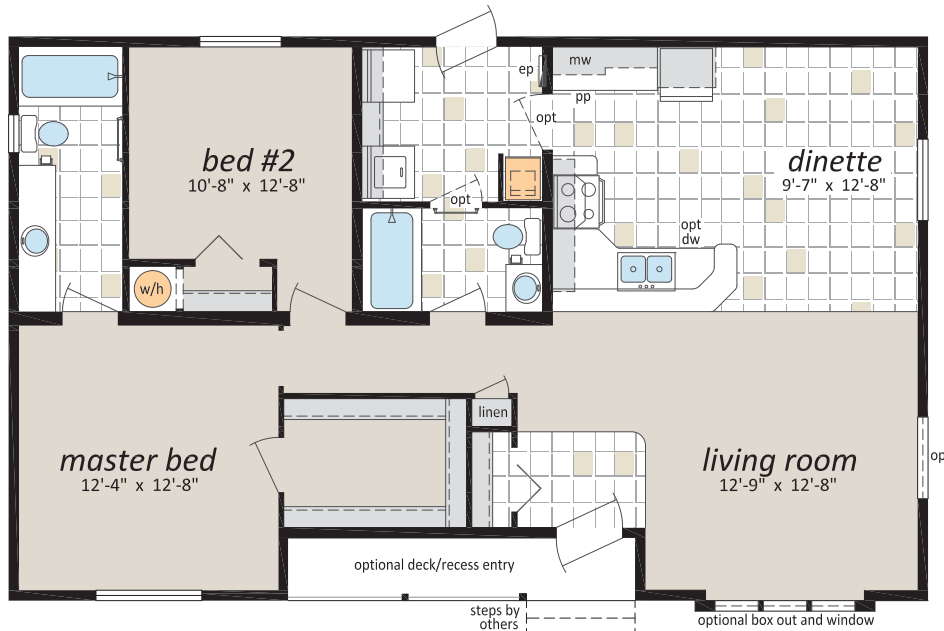
## "The Kimberley" © CDF-202

27' x 44' 1,188 sq. ft.



## "The Ganges" © CDF-208

27' x 44' 1,188 sq. ft.





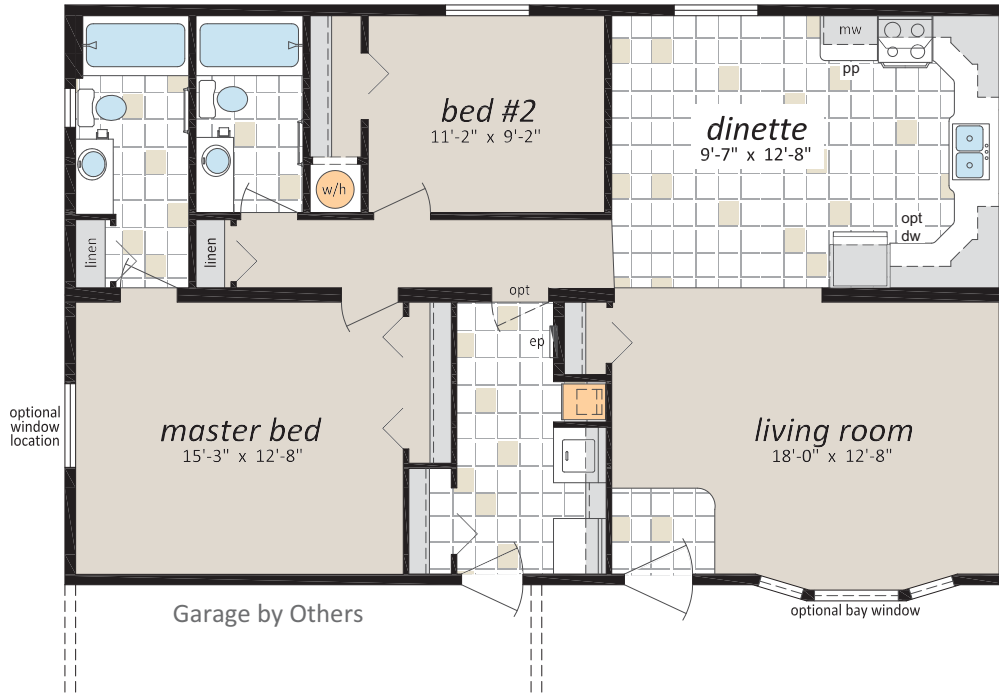
# Rancher Homes

(Self Contained Crawlspace)



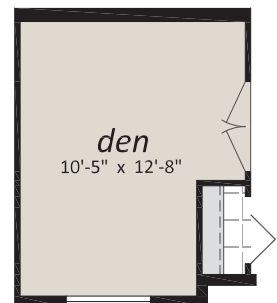
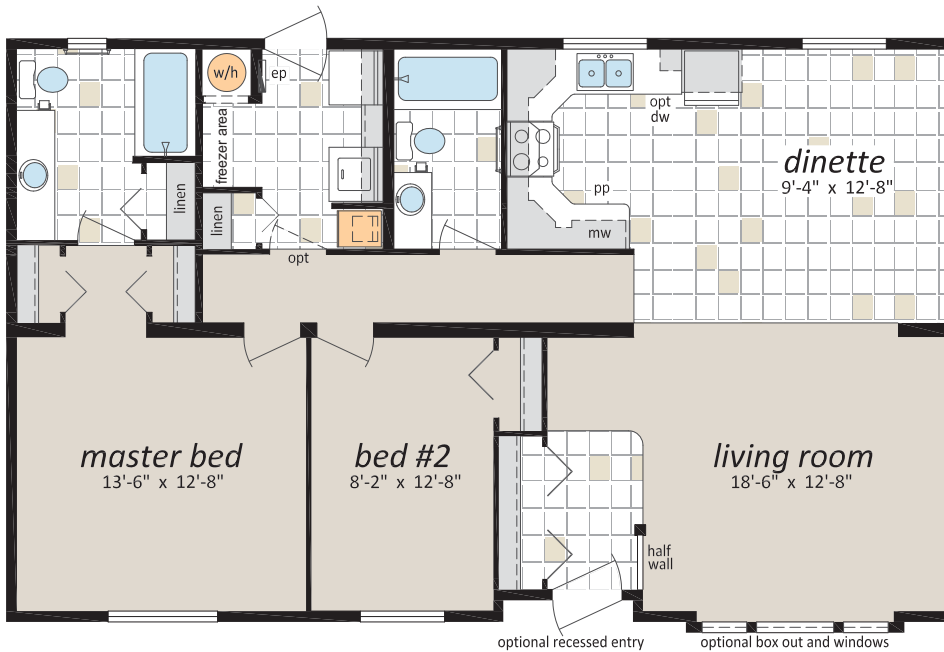
## "The Montrose" © CDF-244

27' x 44' 1,188 sq. ft.



## "The Kitimat" © CDF-290

27' x 44' 1,188 sq. ft.

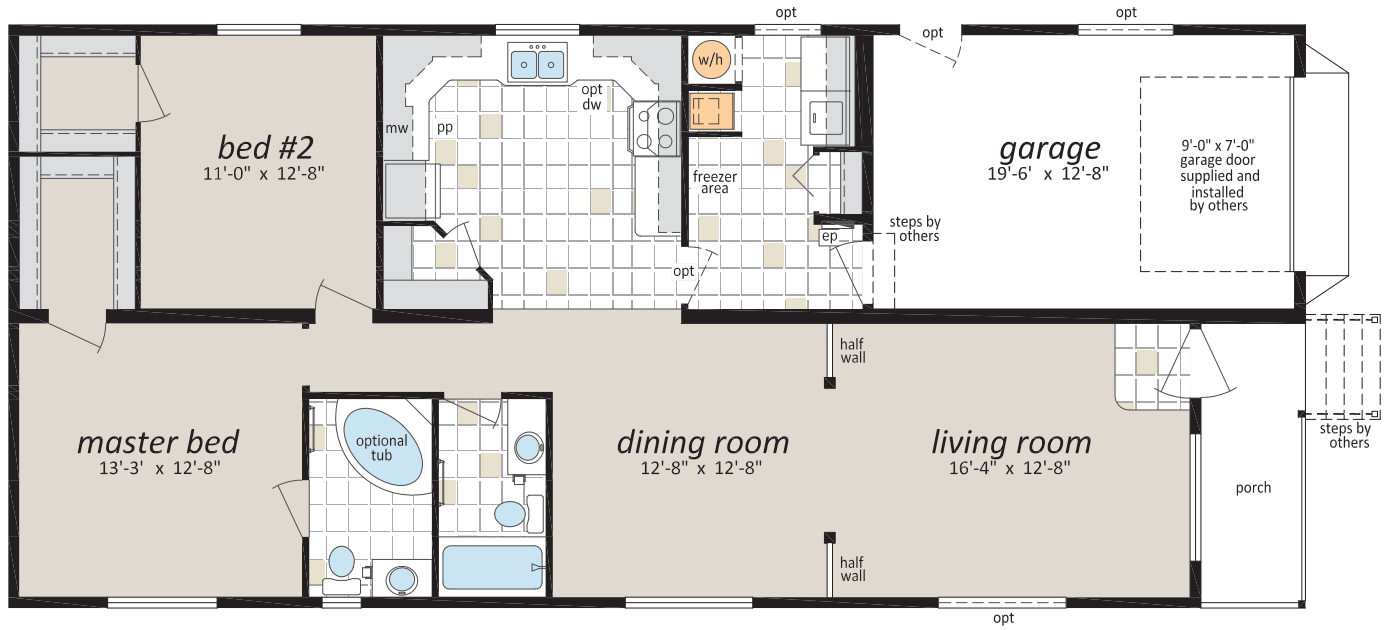


Optional Den



## "The Cherryville" ◉ CDF-295

27' x 40'/55' 1,283 sq. ft.



## "The Wyndell" ◉ CDF-265

27' x 52' 1,404 sq. ft.



Optional Dinette Windows



optional bay window



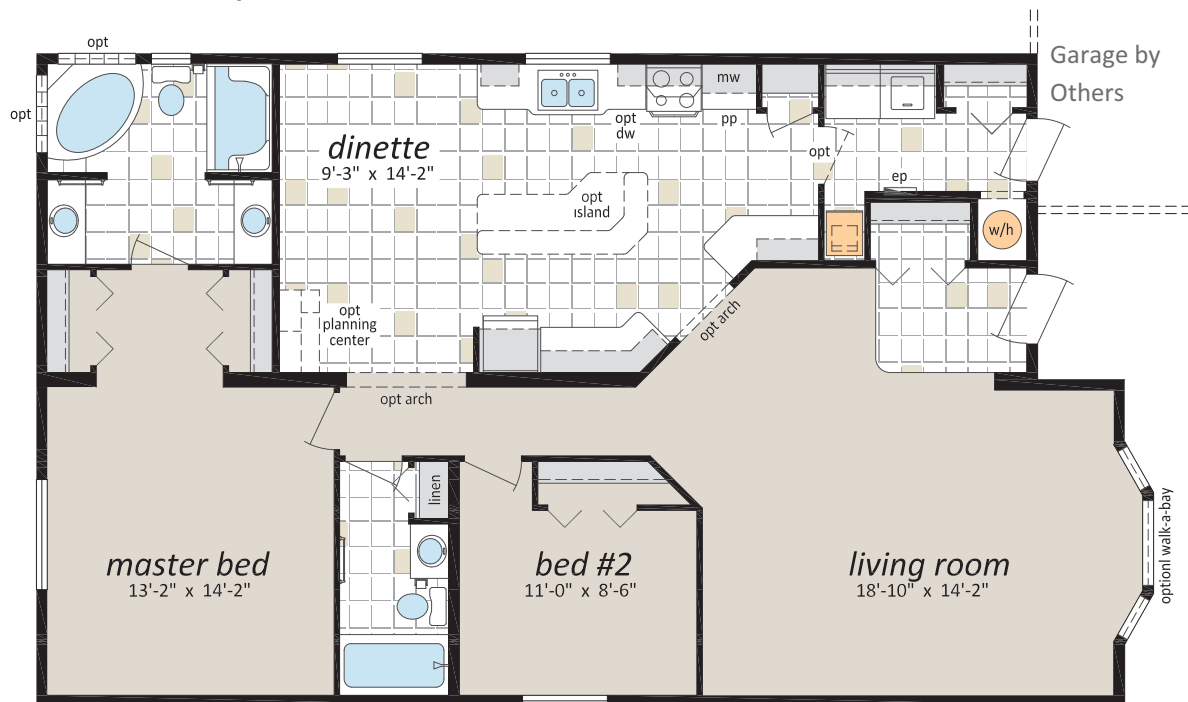
# Rancher Homes

(Self Contained Crawlspace)



## "The Tulameen" © CDF-305

30' x 46'/50' 1,440 sq. ft.



### 30' Wide Floorplan

For limited areas of BC

(Please check with your SRI Retailer)

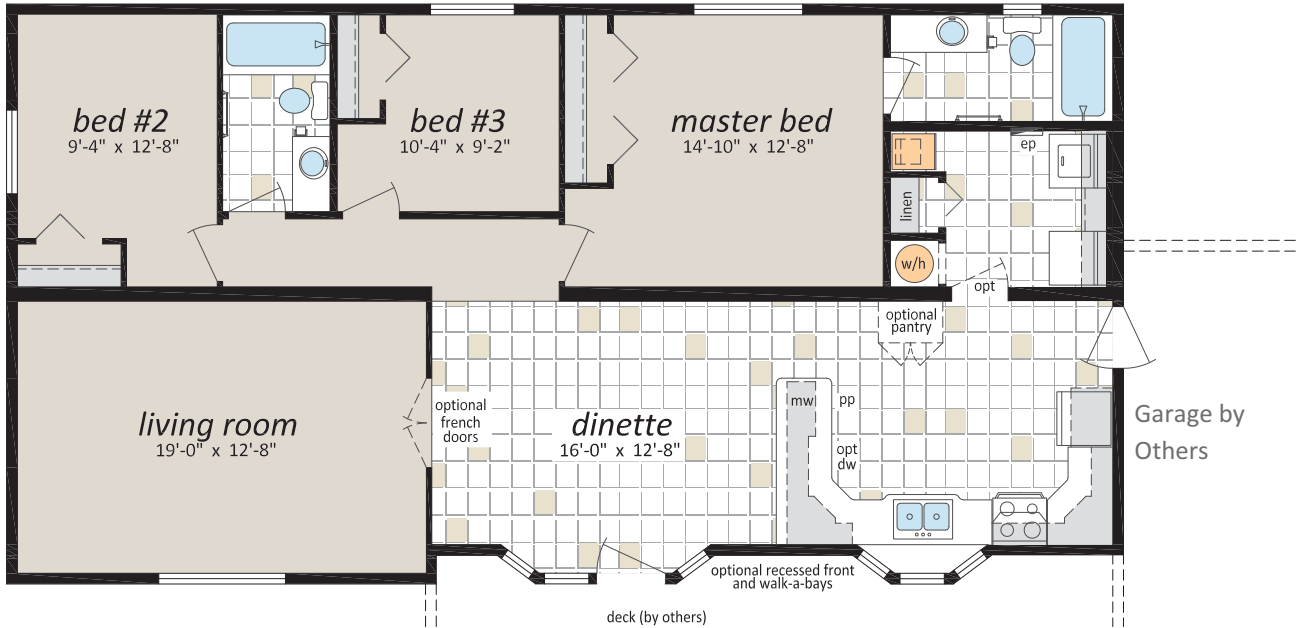






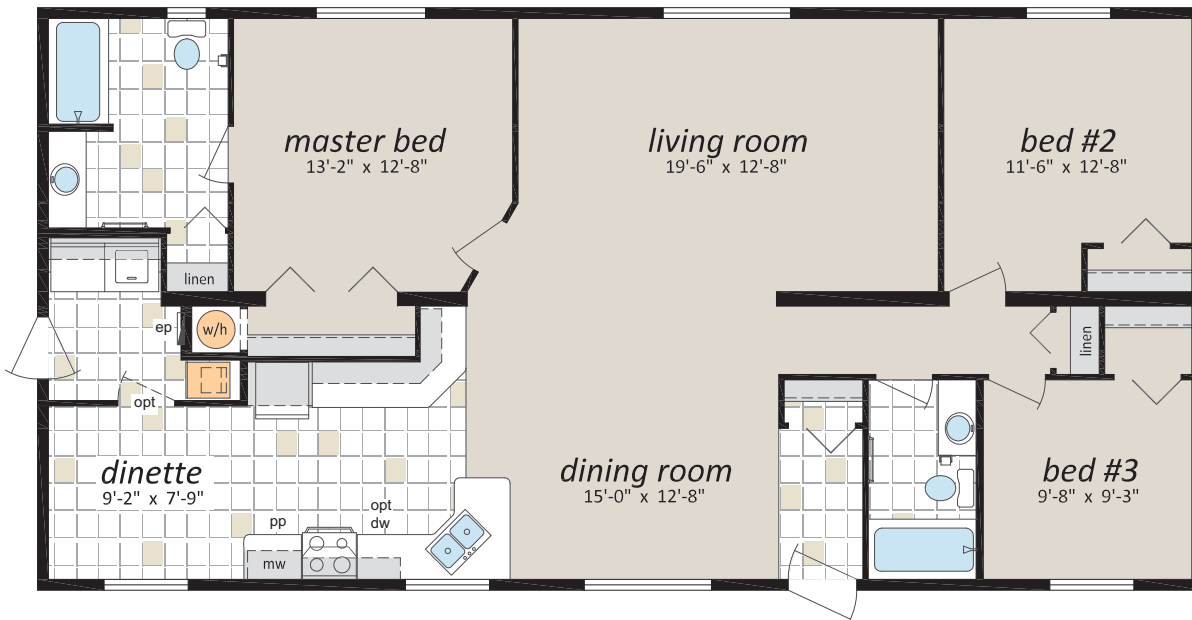
## "The Langley" © CDF-225

27' x 52' 1,404 sq. ft.



## "The Richmond" © CDF-280

27' x 54' 1,458 sq. ft.







# Rancher Homes

(Self Contained Crawlspace)



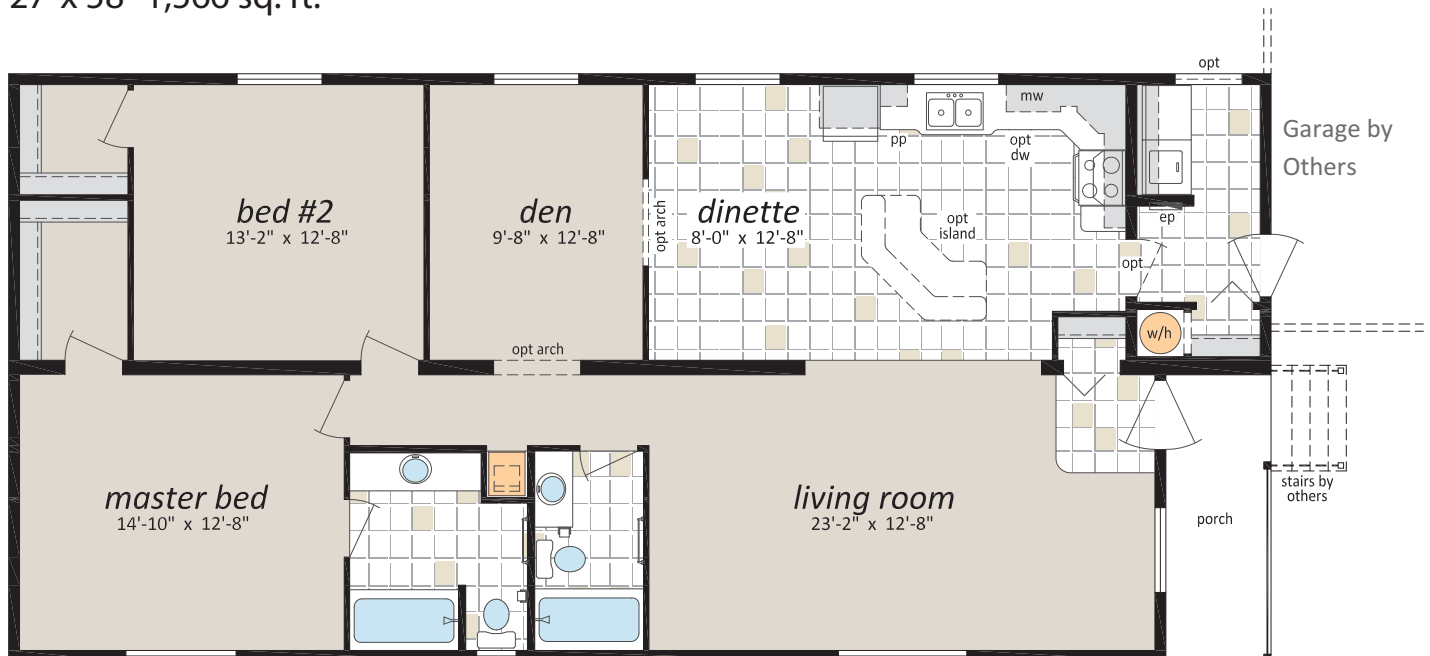
## "The Millwood" © CDF-211

27' x 56' 1,512 sq. ft.



## "The Celista" © CDF-296

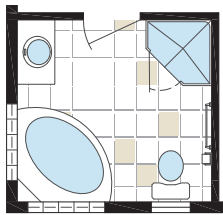
27' x 58' 1,566 sq. ft.



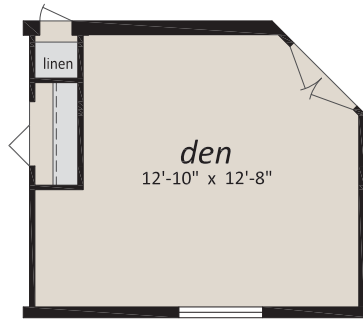


## "The Vernon" © CDF-240

27' x 60' 1,620 sq. ft.



Optional Ensuite

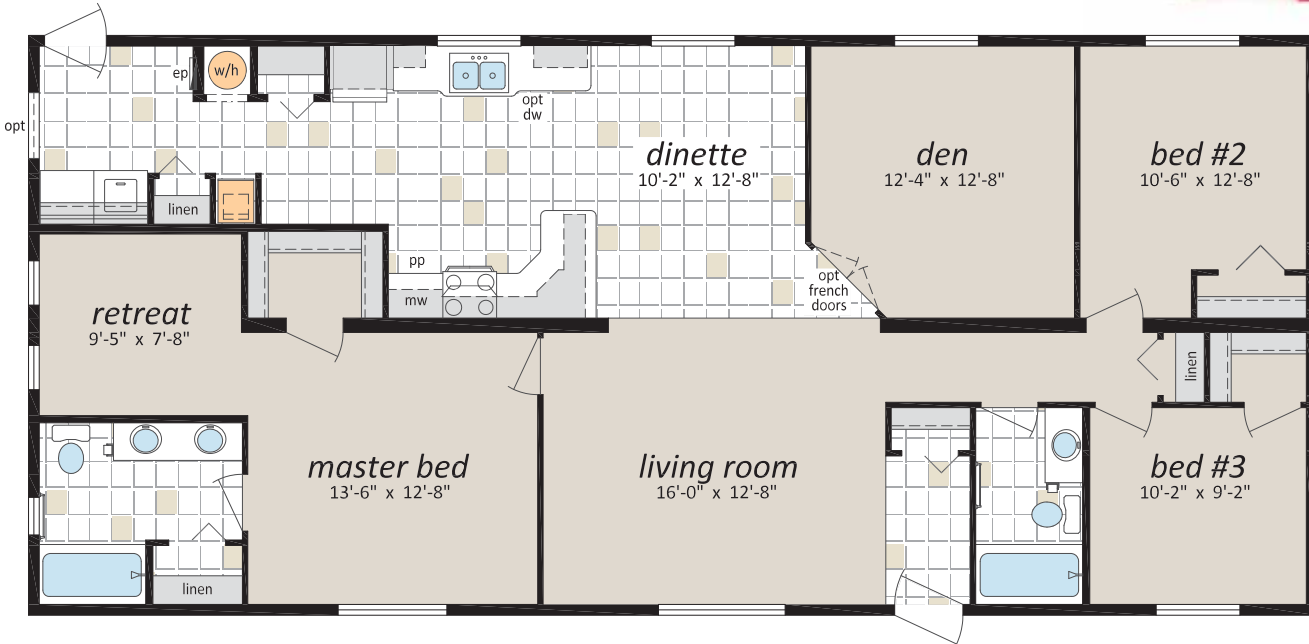


Optional Den



## "The Saturna" © CDF-241

27' x 60' 1,620 sq. ft.





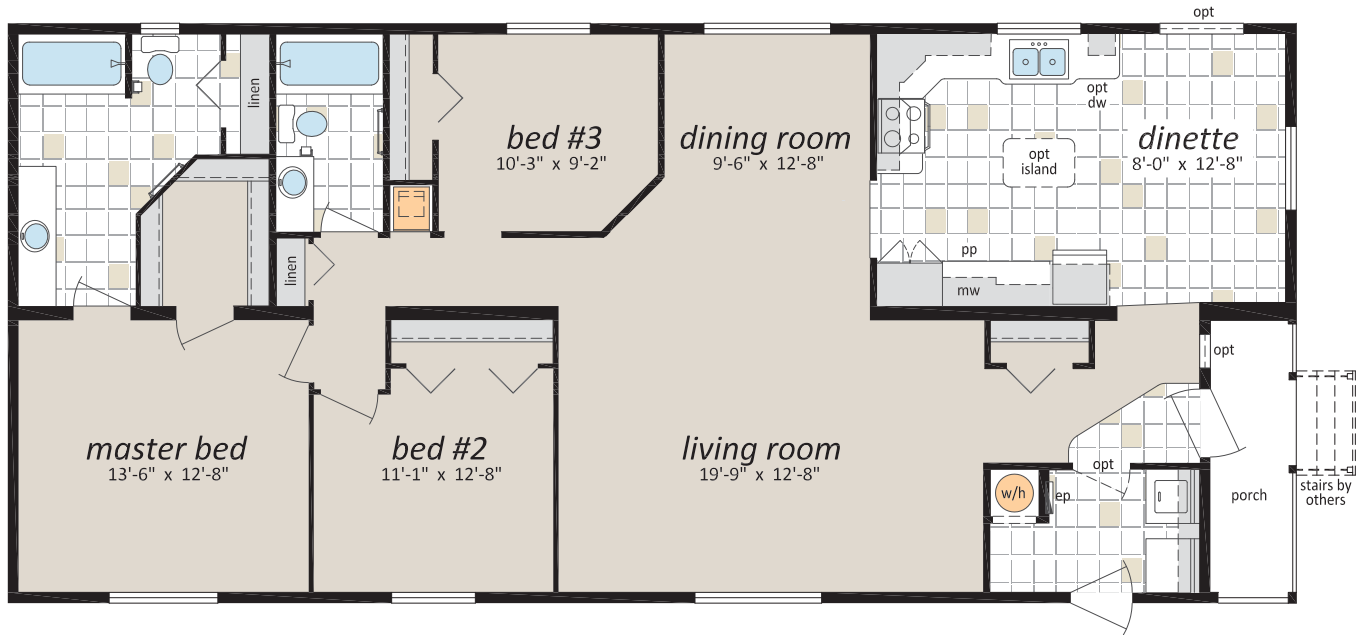
# Rancher Homes

(Self Contained Crawlspace)

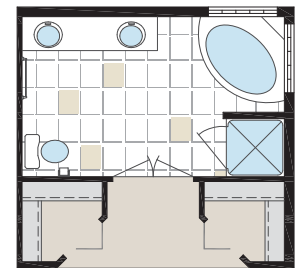
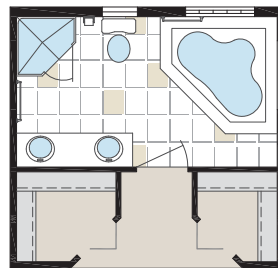


## "The Falkland" © CDF-245

27' x 60' 1,620 sq. ft.

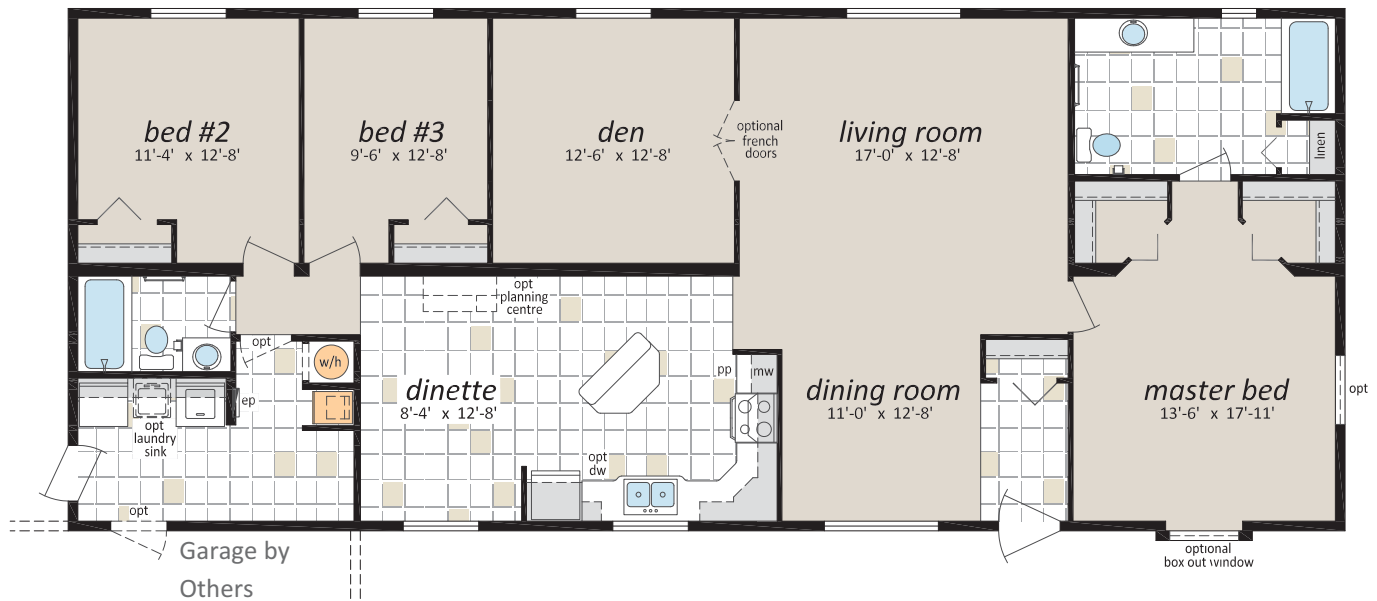


Optional Ensuites



## "The Waterville" © CDF-252

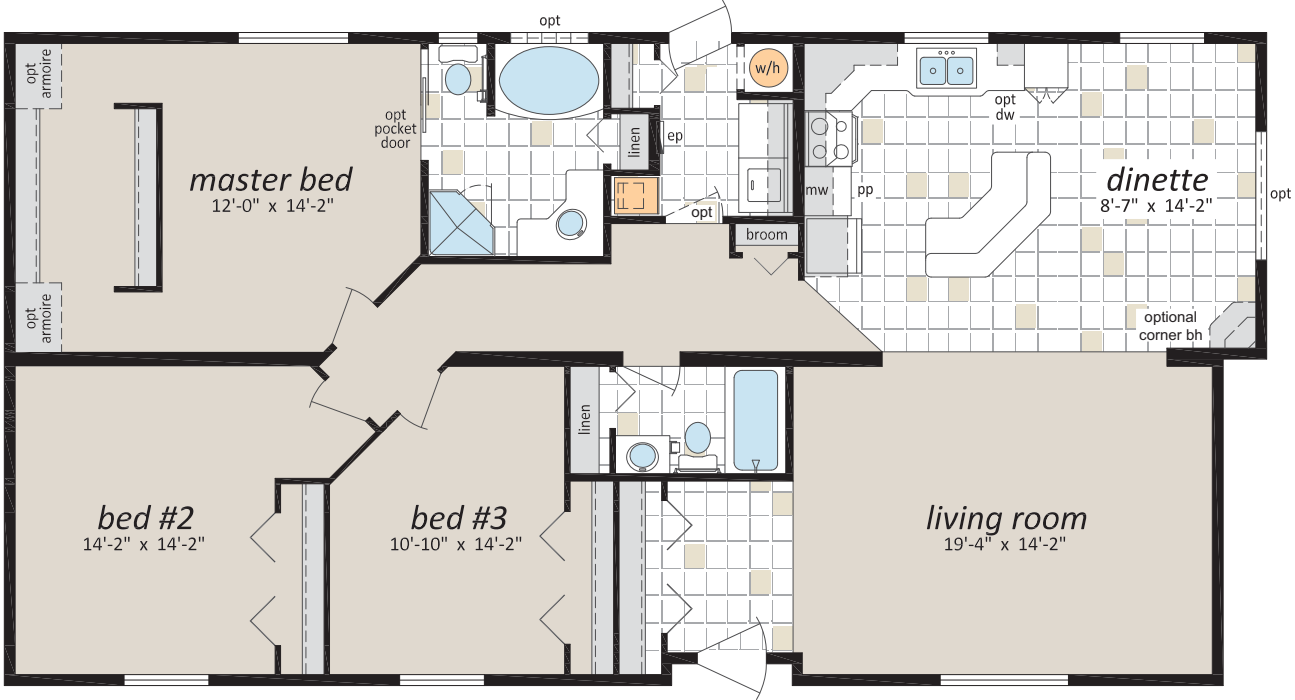
27' x 66' 1,782 sq. ft.





## "The Jaffray" © CDF-300

30' x 56'/58' 1,710 sq. ft.



### 30' Wide Floorplan

For limited areas of BC  
(Please check with your SRI Retailer)



## "The Thetis" © CDF-253

27' x 66' 1,782 sq. ft.







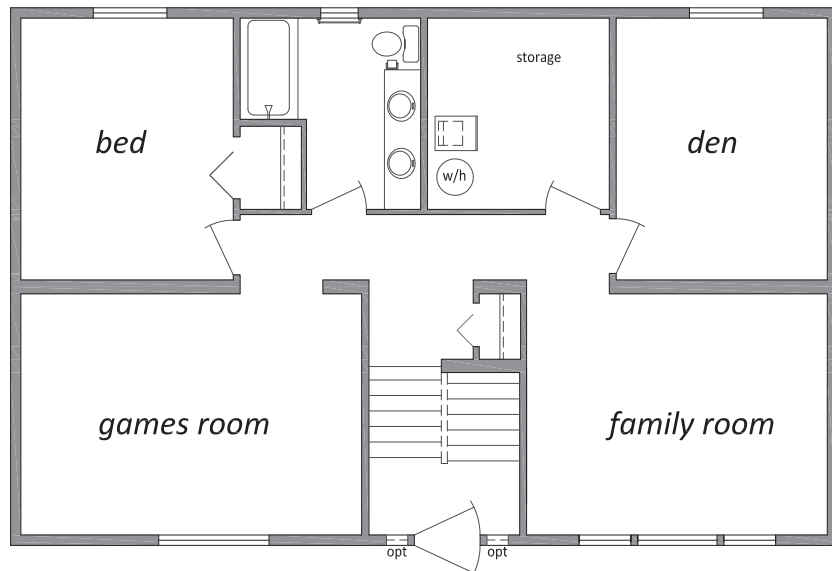
# Split Entry Homes



The Wenatchee © CDF-230 © 27' x 40' © 1,080 sq. ft. (Main Floor)



Main Floor

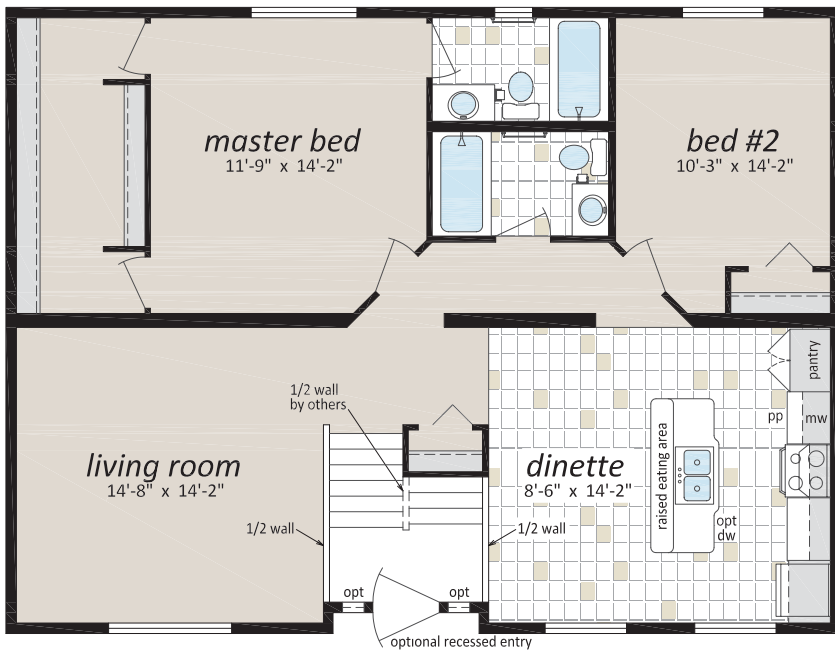


Basement Level (By Others)

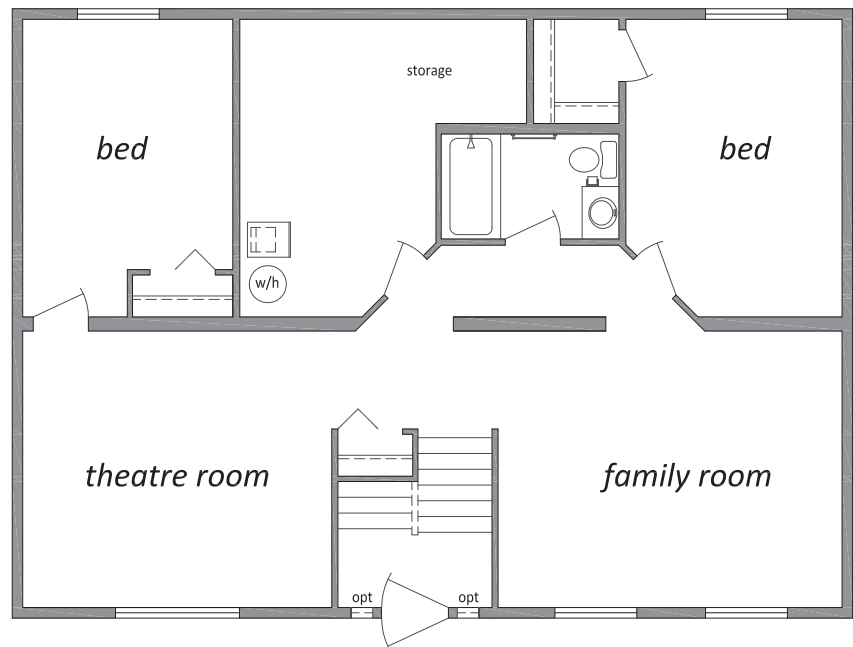
Note: Suggested layout only, local codes may vary design.



**The Cedarville** © CDF-310  
30' x 40' © 1,200 sq. ft. (Main Floor)



Main Floor



*30' Wide Floorplan*

For limited areas of BC  
(Please check with your SRI Retailer)

**Basement Level (By Others)**

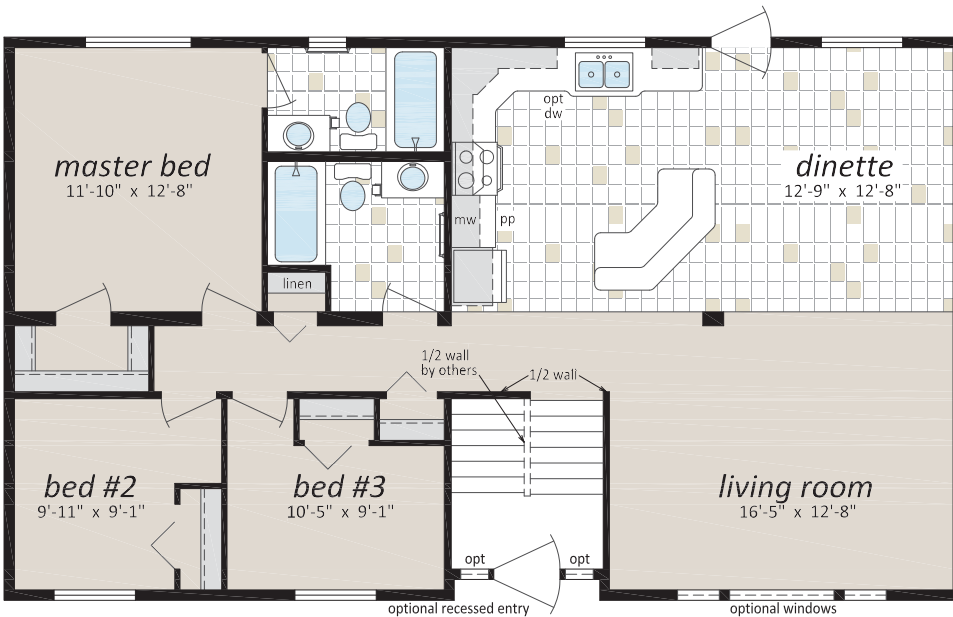
Note: Suggested layout only,  
local codes may vary design.



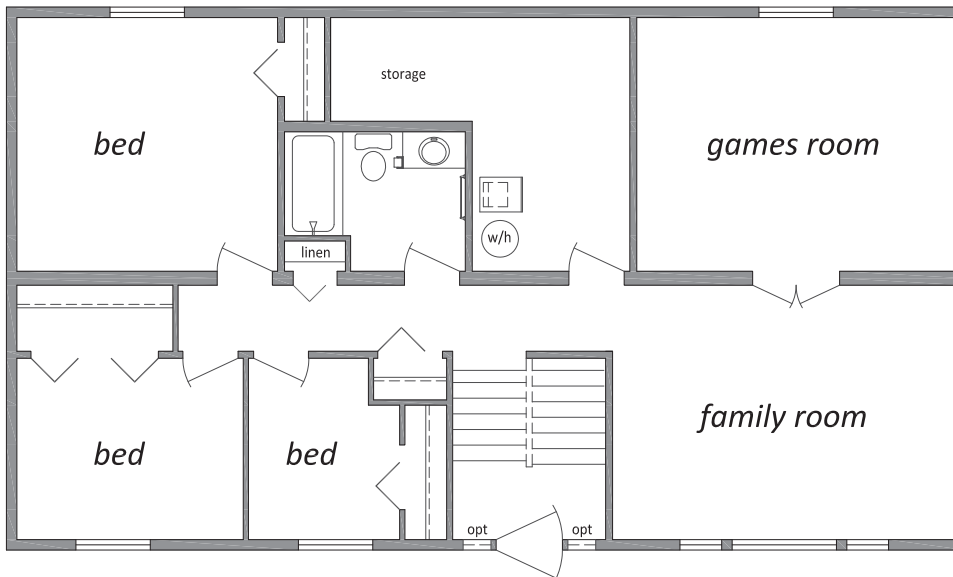
# Split Entry Homes



The Long Beach © CDF-236 © 27' x 46' © 1,242 sq. ft. (Main Floor)

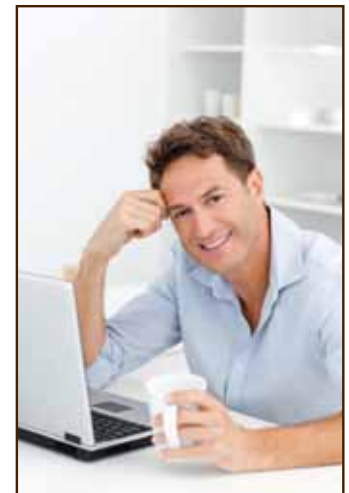


Main Floor



Basement Level (By Others)

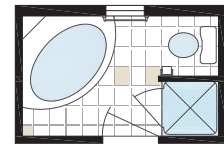
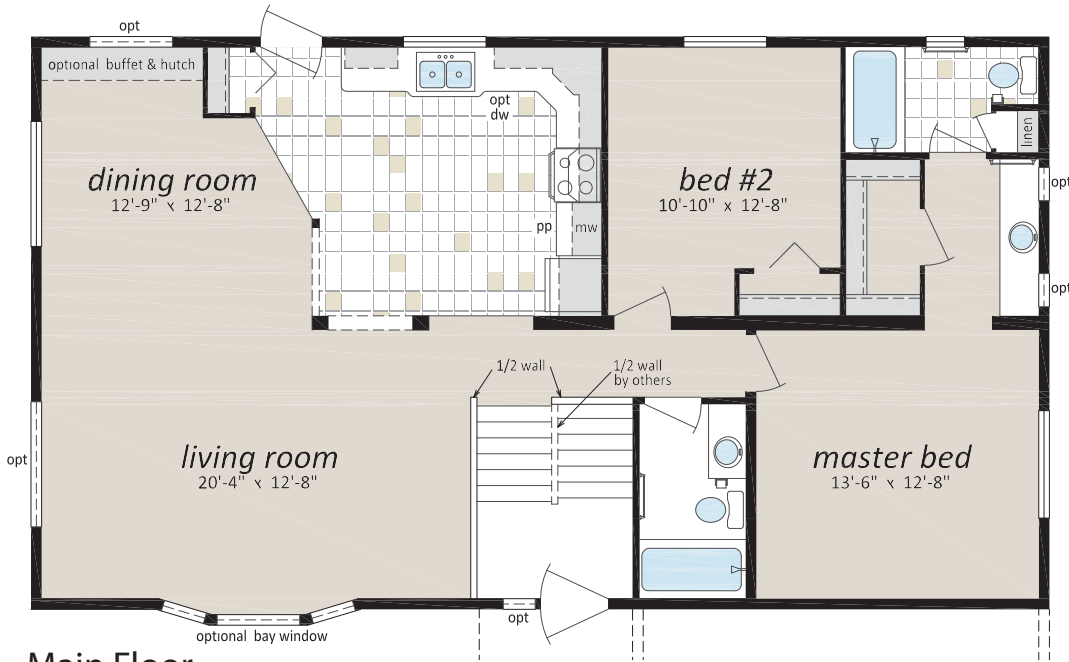
Note: Suggested layout only, local codes may vary design.



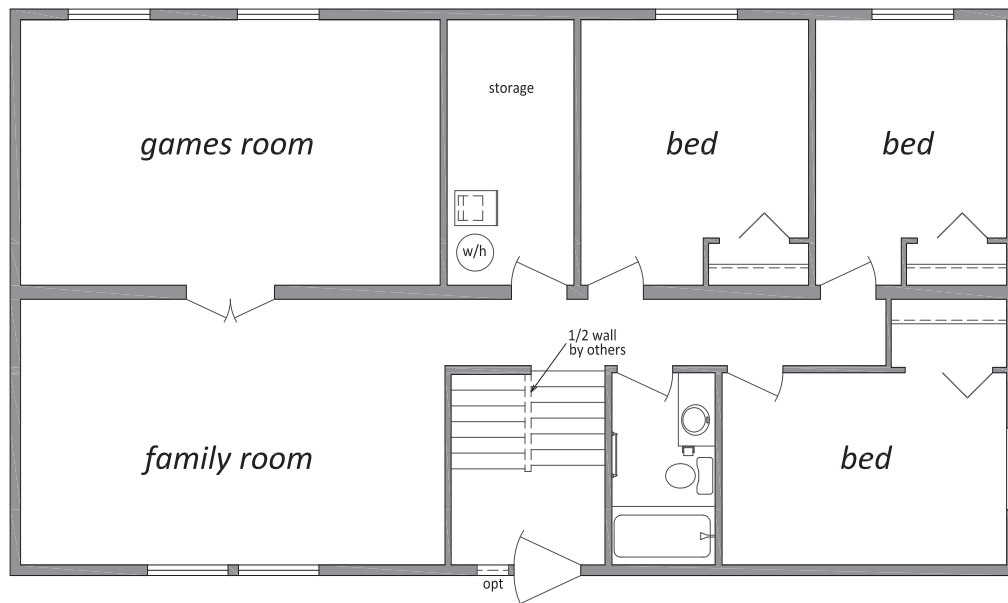




The Chemainus © CDF-201 © 27' x 48' © 1,296 sq. ft. (Main Floor)



Optional Ensuite



Basement Level (By Others)

Note: Suggested layout only, local codes may vary design.

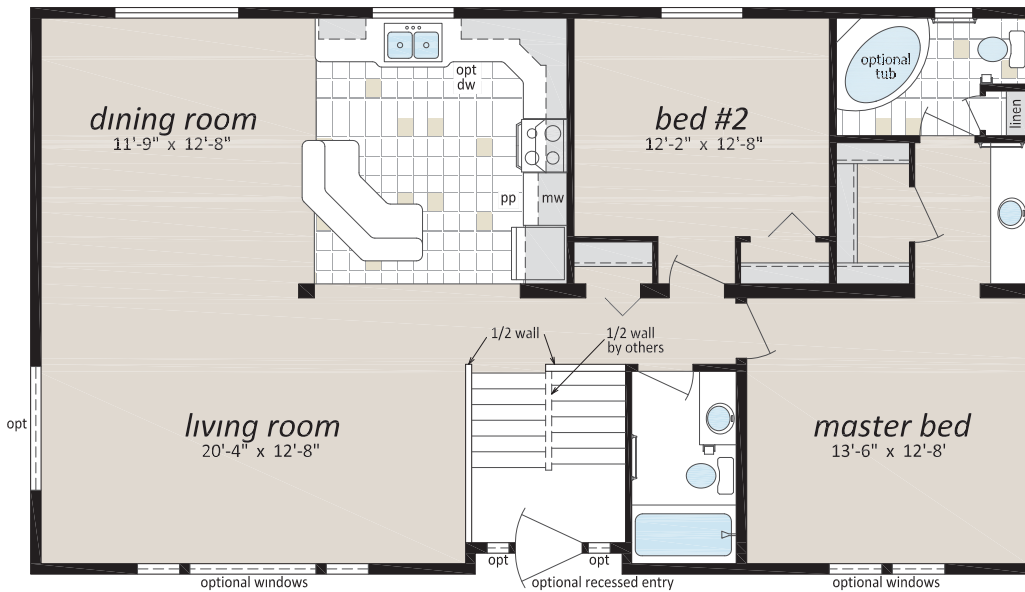




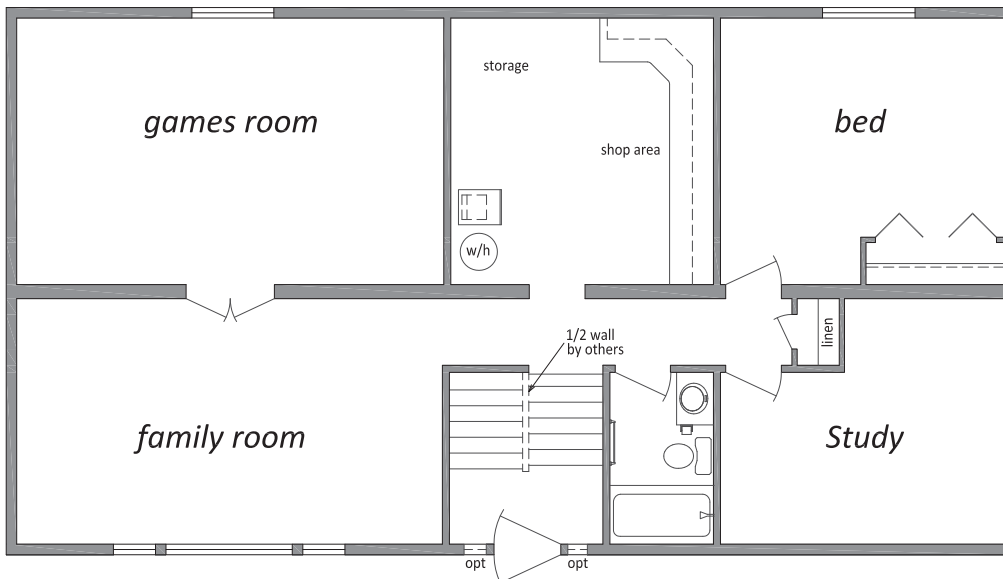
# Split Entry Homes



The Drummond © CDF-203 © 27' x 48' © 1,296 sq. ft. (Main Floor)



Main Floor

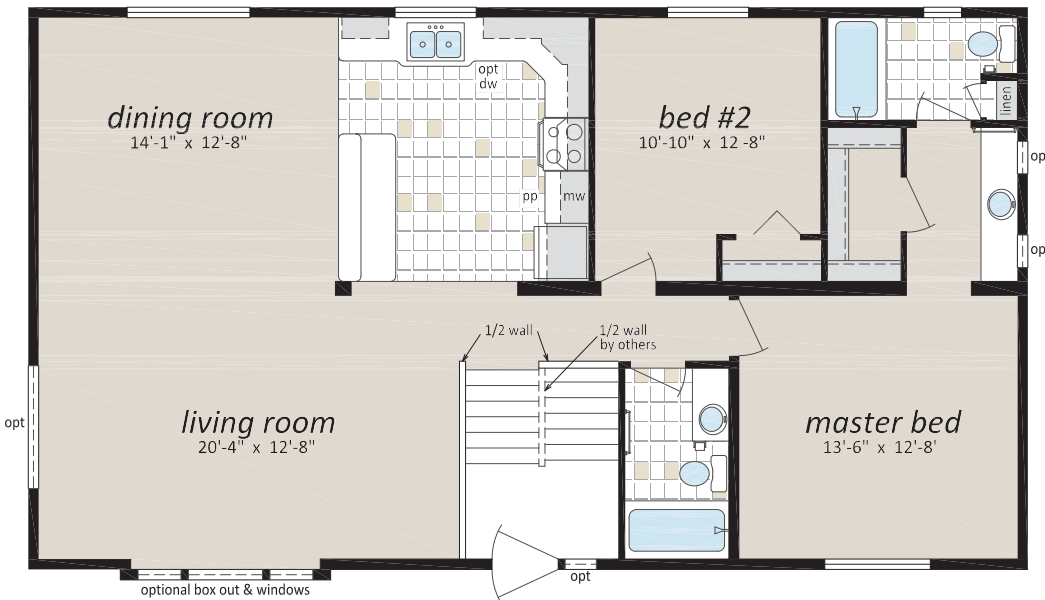


Basement Level (By Others)

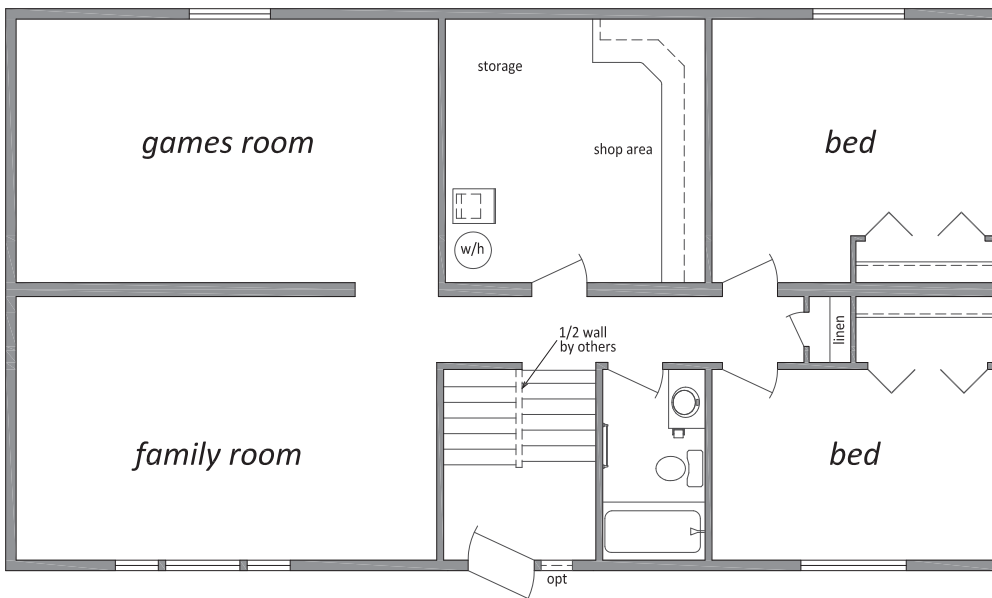
Note: Suggested layout only, local codes may vary design.



The Victoria © CDF-204 © 27' x 48' © 1,296 sq. ft. (Main Floor)



Main Floor



Basement Level (By Others)

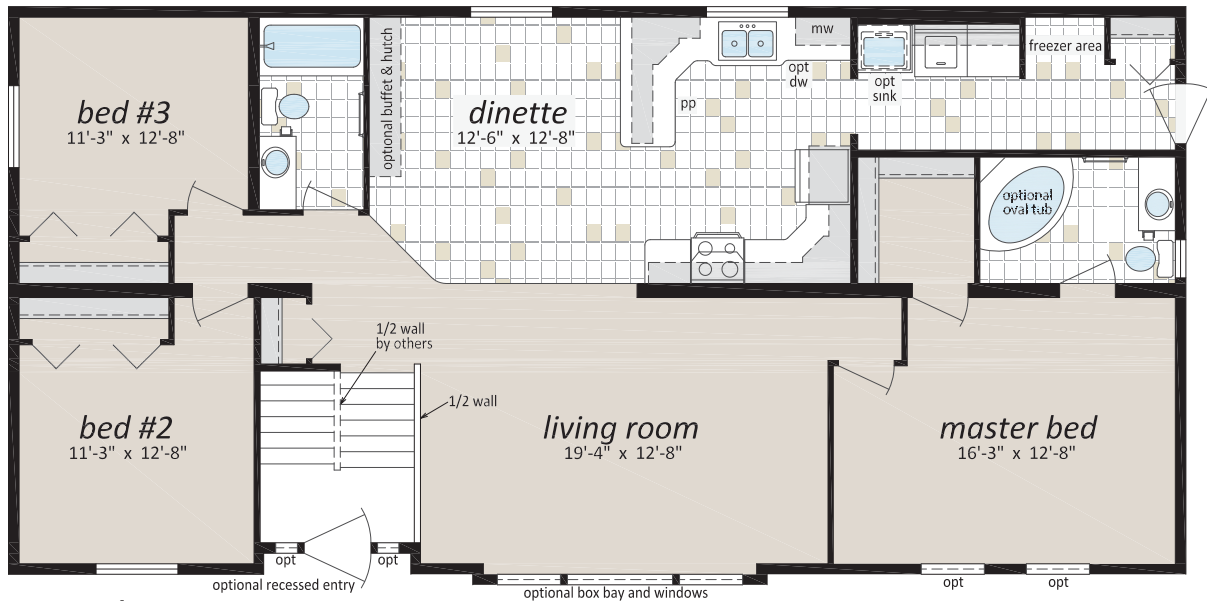
Note: Suggested layout only, local codes may vary design.



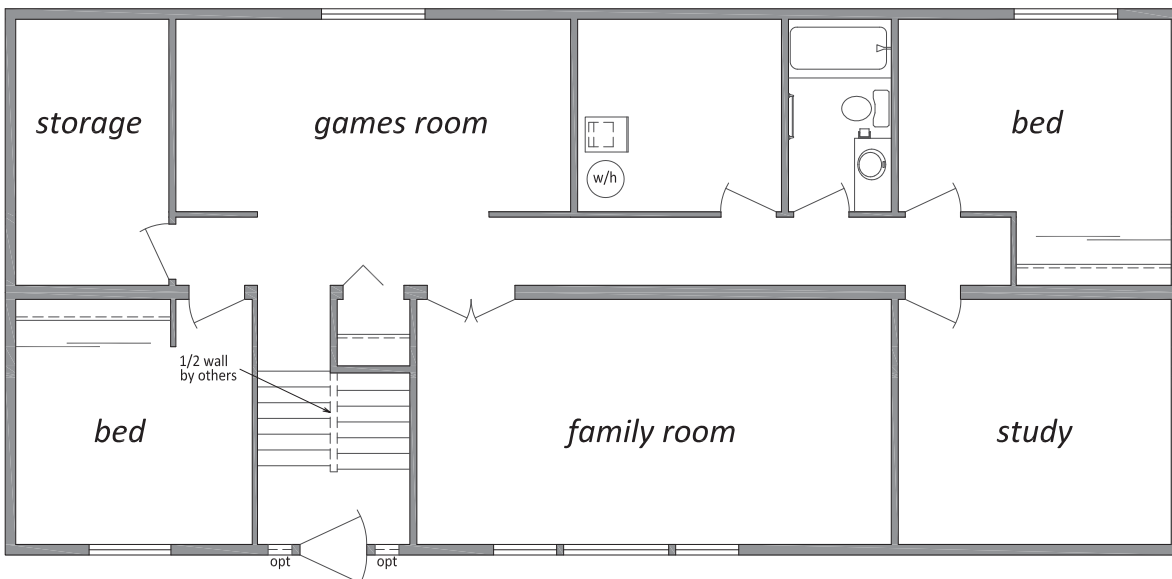
# Split Entry Homes



The Alexandria © CDF-220 © 27' x 56' © 1,512 sq. ft. (Main Floor)



Main Floor



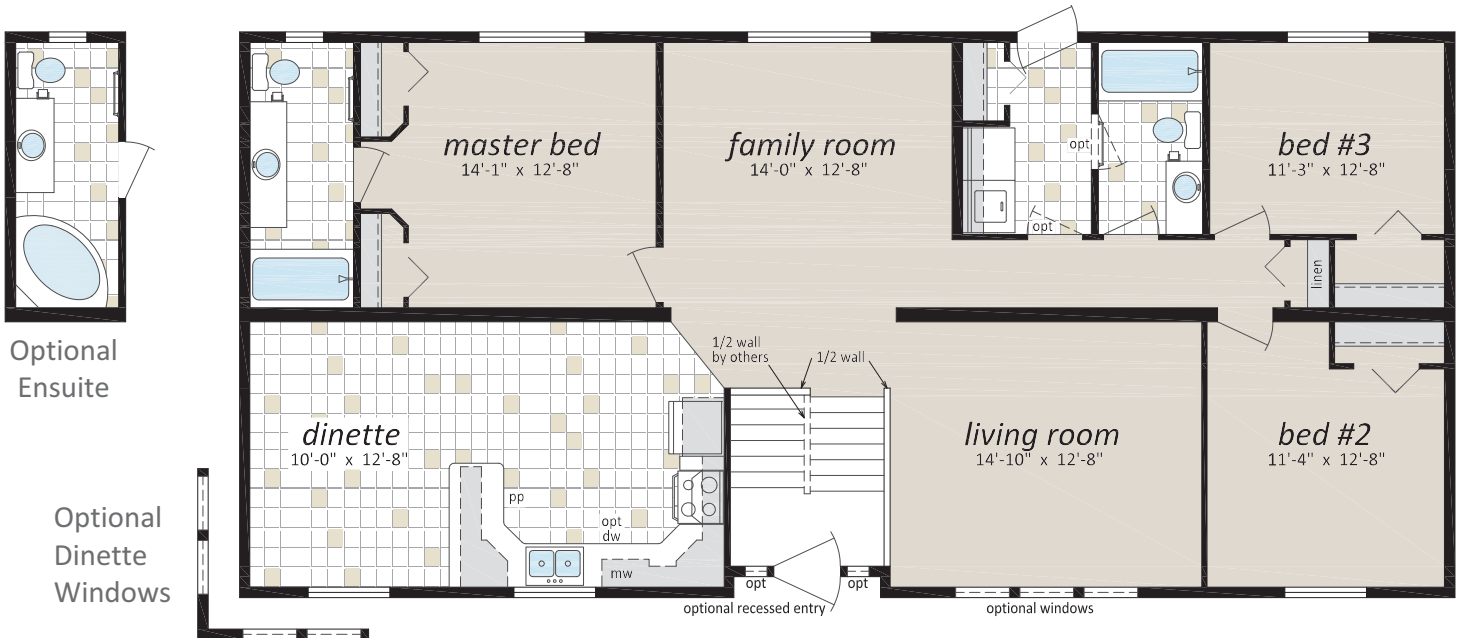
Basement Level (By Others)

Note: Suggested layout only, local codes may vary design.

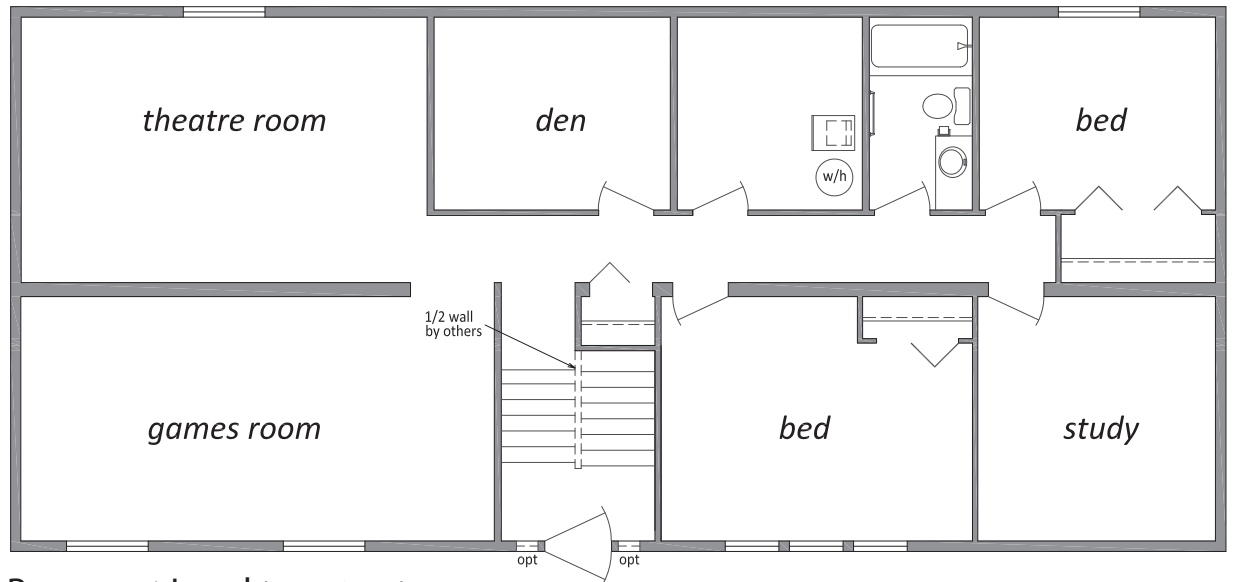




The Mackenzie © CDF-215 © 27' x 58' © 1,566 sq. ft. (Main Floor)



Main Floor



Basement Level (By Others)

Note: Suggested layout only, local codes may vary design.

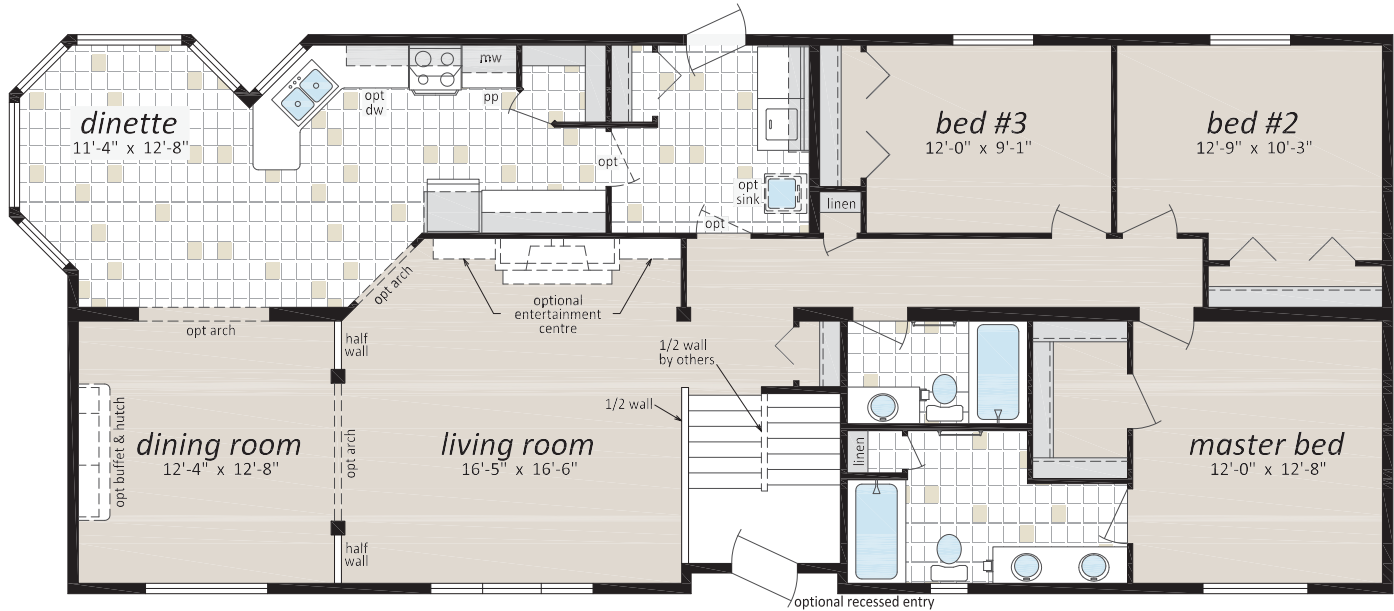




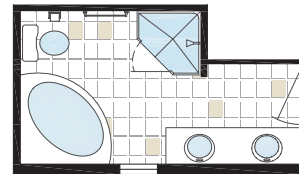
# Split Entry Homes



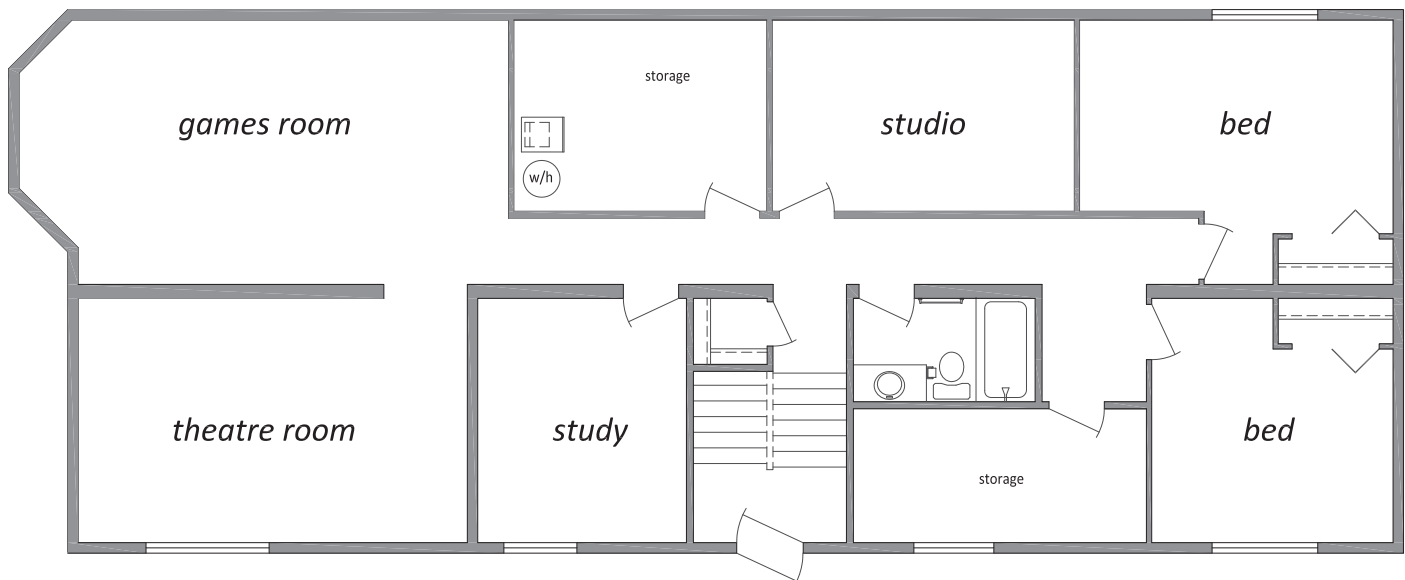
The Quatsino ◉ CDF-260 ◉ 27' x 64' ◉ 1,728 sq. ft. (Main Floor)



Main Floor



Optional Ensuite

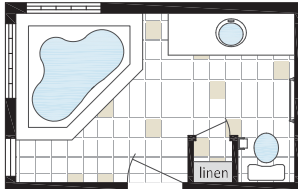


Basement Level (By Others)

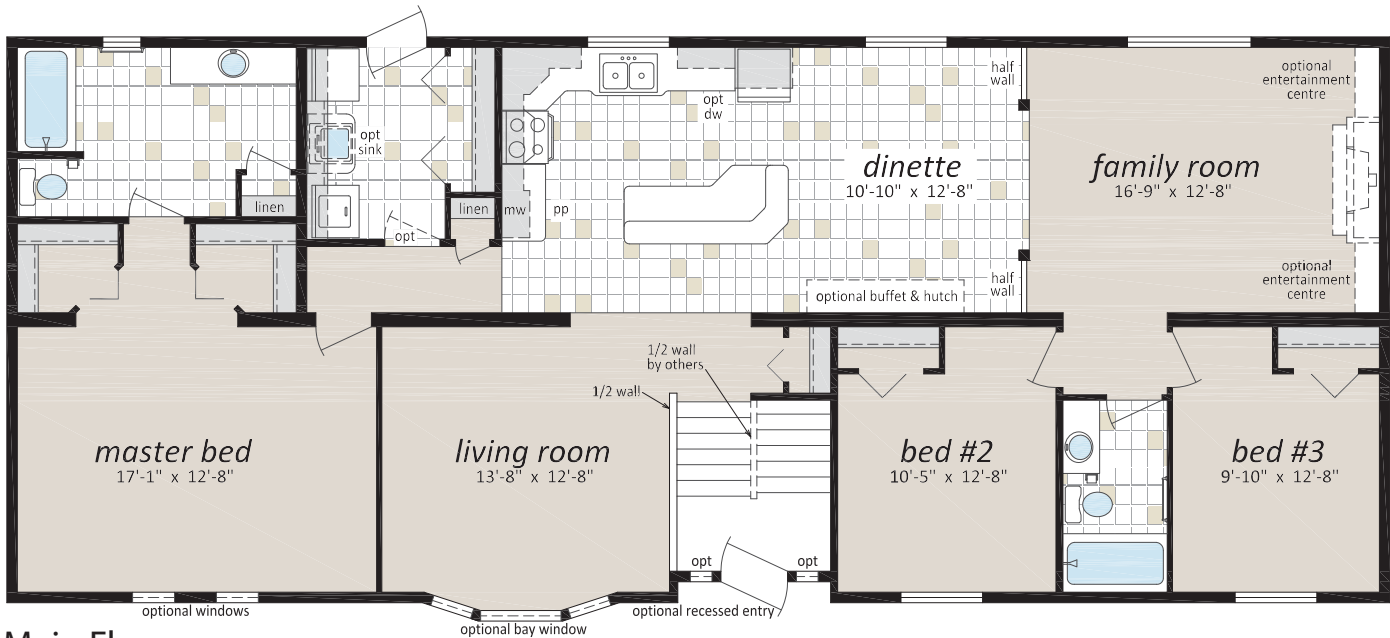
Note: Suggested layout only, local codes may vary design.



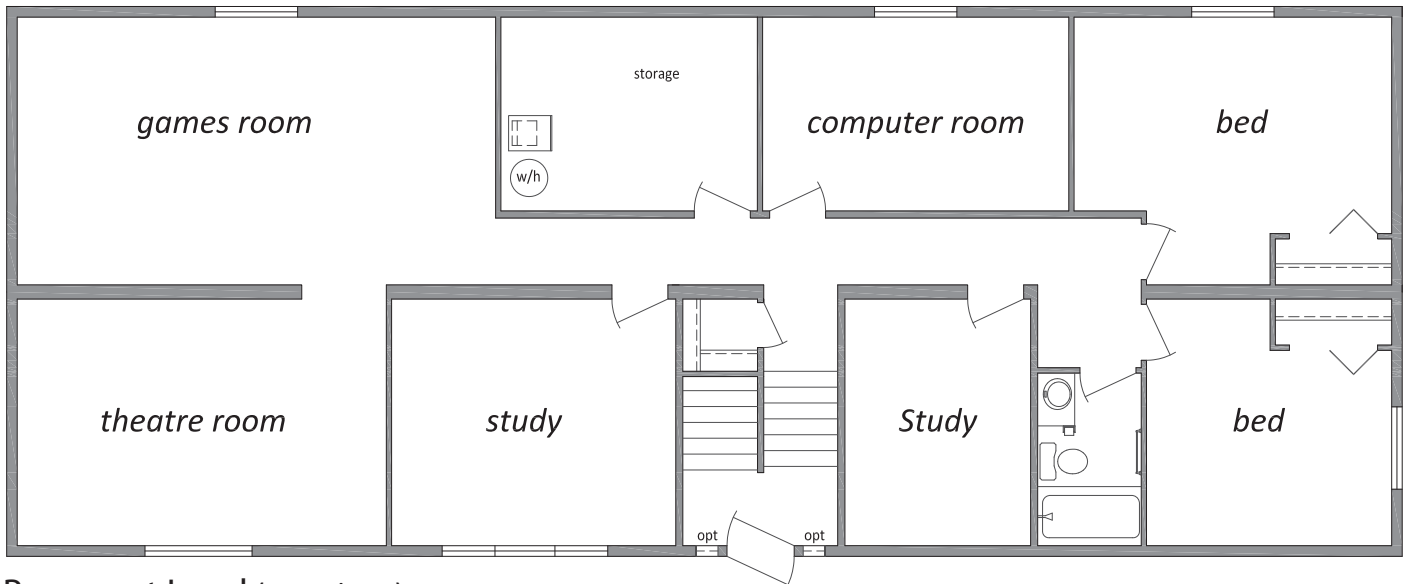
## The Cloverdale ◉ CDF-250 ◉ 27' x 66' ◉ 1,782 sq. ft. (Main Floor)



Optional  
Ensuite



Main Floor



Basement Level (By Others)

Note: Suggested layout only, local codes may vary design.



## Optional Features

### Exterior

- Painted "Smart Start" Fascia, Window and Door Trim
- Third Gable (8' to 24')
- Transverse Vault and Vaulted Ceilings
- 9' Ceilings
- Vinyl "Shake" Siding in Gable
- Hardie Plank Siding
- Pewter Toe Kick and/or Thumb Latch
- Garden and Patio Doors
- Exterior Door with Half Round, 9 Lite, Athens or Cascade Insert
- Trapezoid and Octagon Windows
- Acrylic Block Windows
- Grids in Windows
- Vinyl Shutters
- Painted Smart Start Shutters
- Turbine Vents
- Octagon Vents
- Extra Exterior GFI



### Interior

- Laminate Flooring
- Ceramic Tile Flooring
- Upgrade Lino
- 2" Faux Wood Blinds
- Chair Rail
- French Doors
- Mirrored Closet Doors
- Utility Room Door with Grill
- Freezer Cabinets
- Soak Sink with Cabinet
- Ceiling Fan with Lights
- Recessed Fluorescent Lights
- Insulation in Inside Walls for Sound Proofing
- Archways
- Deluxe Drapery Packages

### Kitchen

- Shaker or Shaker V-Groove PVC Cabinet Doors
- Island Work Centre
- Upgrade High Definition Counter Laminate
- Upgrade High Definition Bevelled Counter Edging
- Appliance Garage
- Planning Centre

### Kitchen (cont'd)

- Lazy Susan
- Candlelight, Chocolate, Summer Flame or Natural Oak Reveal Counter Edging
- White or Black Sink
- Combination Microwave/Range Hood
- Namebrand Appliances in White, Black or Stainless
- Built In Dishwasher
- Eye Level Oven and Cook Top
- Two Door Side by Side Refrigerator (with water and ice maker)
- Raised Dishwasher Cabinet with Drawer below
- Pullout Trash and Recycle bins

### Bathroom

- Oval Tub or Corner Oval Tub
- Jetted Spa Option (available on any tub)
- 2 Person Jetted Tub
- 36", 48" or 60" Shower Stall
- Low Barrier Shower
- Handicap Toilet
- Tri-Mirror Medicine Cabinet
- Grab Bars
- Deluxe Tub Drapery
- Vanity Top Medicine Cabinets

### Utilities

- Gas Fireplace with Air Circulating Fan
- 40 Gallon U.S. Gas Water Heater
- Forced Air Electric Furnace
- Washer and Dryer
- Stacking Washer and Dryer
- Front Loading Washer and Dryer
- Central Vacuum System
- Roughed in for Central Vacuum
- 200 Amp Service Panel
- Extra Telephone /Cable Box(es)
- Pre-wire for Telephone and/or Cable



# The Modular Home Series



Authorized Retailer:



9500 Jim Bailey Road . Kelowna . BC . V4V 1S5 . 250-766-0588

[www.winfieldhomes.ca](http://www.winfieldhomes.ca)

Follow us: 